

\$509,900 - 634 Glenwright Crescent, Edmonton

MLS® #E4445124

\$509,900

4 Bedroom, 3.50 Bathroom, 1,795 sqft

Single Family on 0.00 Acres

Glastonbury, Edmonton, AB

Welcome to this fully upgraded home in the sought-after family neighborhood of Glastonbury! This 2-storey gem with a fully finished basement backs onto Glastonbury Park, featuring a spray park, playground & more. With 4 bedrooms, a spacious bonus room, 3.5 bathrooms, main floor laundry, and a double attached garage, it's perfect for modern family living. The open-concept main floor is warm and inviting, with a dining area that opens to a large deck. The chef's kitchen boasts brand new stainless steel appliances, stunning quartz countertops, and a walk-in pantry. The completed basement offers a bedroom, 3-pc bathroom, and a large rec area—ideal for guests or family fun. Enjoy the generous backyard—perfect for relaxing or play. Recent upgrades (June 2025) include brand new carpet, quartz counters throughout, full interior paint, all new appliances & shingles (2015). Minutes to schools, shopping, and West Edmonton Mall, with quick access to Whitemud & Anthony Henday.

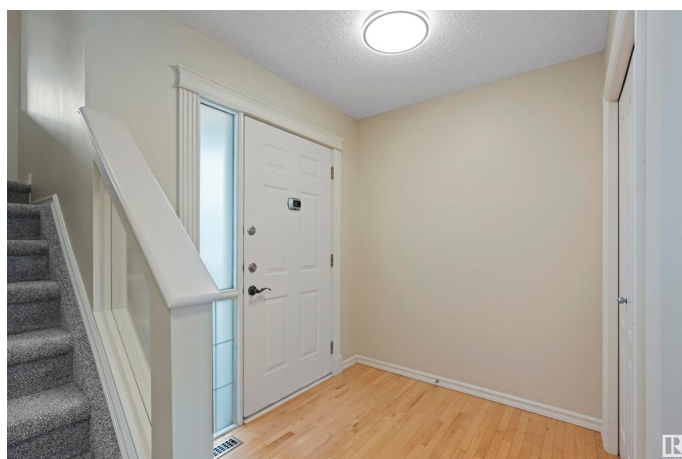
Built in 1999

Essential Information

MLS® # E4445124

Price \$509,900

Bedrooms 4



Bathrooms	3.50
Full Baths	3
Half Baths	1
Square Footage	1,795
Acres	0.00
Year Built	1999
Type	Single Family
Sub-Type	Detached Single Family
Style	2 Storey
Status	Active

Community Information

Address	634 Glenwright Crescent
Area	Edmonton
Subdivision	Glastonbury
City	Edmonton
County	ALBERTA
Province	AB
Postal Code	T5T 6K6

Amenities

Amenities	Deck, Front Porch, No Animal Home, No Smoking Home
Parking Spaces	4
Parking	Double Garage Attached

Interior

Interior Features	ensuite bathroom
Appliances	Dishwasher-Built-In, Dryer, Garage Control, Garage Opener, Hood Fan, Refrigerator, Stove-Electric, Washer, Window Coverings
Heating	Forced Air-1, Natural Gas
Fireplace	Yes
Fireplaces	Glass Door, Mantel
Stories	3
Has Basement	Yes
Basement	Full, Finished

Exterior

Exterior	Wood, Vinyl
Exterior Features	Backs Onto Park/Trees, Fenced, Landscaped, Public Transportation,

	Schools
Roof	Asphalt Shingles
Construction	Wood, Vinyl
Foundation	Concrete Perimeter

School Information

Elementary	Kim Hung School
Middle	Kim Hung School
High	Jasper Place School

Additional Information

Date Listed	June 30th, 2025
Days on Market	12
Zoning	Zone 58
HOA Fees	100
HOA Fees Freq.	Annually

DATA IS DEEMED RELIABLE BUT IS NOT GUARANTEED ACCURATE BY THE REALTORS® ASSOCIATION OF EDMONTON. COPYRIGHT 2025 BY THE REALTORS® ASSOCIATION OF EDMONTON. ALL RIGHTS RESERVED. Trademarks are owned or controlled by the Canadian Real Estate Association (CREA) and identify real estate professionals who are members of CREA (REALTOR®, REALTORS®) and/or the quality of services they provide (MLS®, Multiple Listing Service®)

Listing information last updated on July 12th, 2025 at 9:02pm MDT