

Courtesy Of Deborah A McGuire Of MaxWell Polaris

\$549,000 - 6 53026 Rge Road 43, Rural Parkland County

MLS® #E4444897

\$549,000

0 Bedroom, 0.00 Bathroom,
Rural on 0.00 Acres

Rizzie Beach, Rural Parkland County, AB

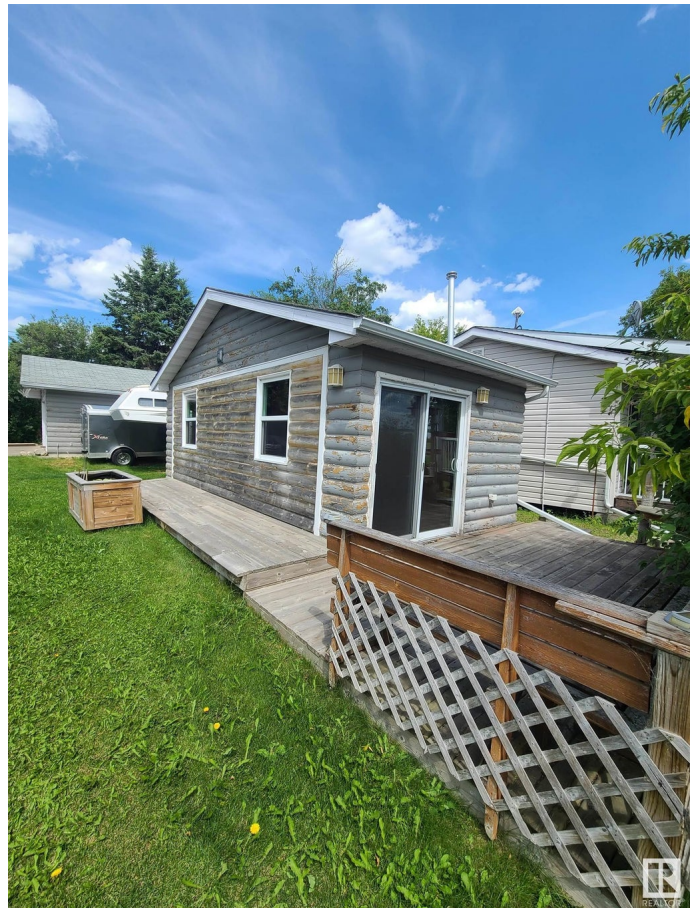
Exceptional Lakefront Opportunity at Rizzie Beach. Your lakefront dream begins with this rare find just steps from the Wabamun Sailing Club. This spacious 50' x 150' level lot sits right on the water's edge—an ideal spot to build a family retreat that will be enjoyed for years to come. Only 12 minutes from the Town of Wabamun and 45 minutes from Edmonton, it's the perfect balance of peaceful escape and convenience. Zoned RS Residential. Utilities (well and electricity) will need to be added. Property includes a newer double garage and a cozy bunkhouse with a deck—perfect for weekend getaways while you plan your build.

Essential Information

MLS® #	E4444897
Price	\$549,000
Bathrooms	0.00
Acres	0.00
Type	Rural
Sub-Type	Vacant Lot/Land
Status	Active

Community Information

Address	6 53026 Rge Road 43
Area	Rural Parkland County
Subdivision	Rizzie Beach



City	Rural Parkland County
County	ALBERTA
Province	AB
Postal Code	T0E 2K0

Exterior

Exterior Features Beach Access, Boating, Flat Site, Lake View, Level Land, Private Fishing, Private Setting, Treed Lot, Waterfront Property

Additional Information

Date Listed	June 26th, 2025
Days on Market	5
Zoning	Zone 93

DATA IS DEEMED RELIABLE BUT IS NOT GUARANTEED ACCURATE BY THE REALTORS® ASSOCIATION OF EDMONTON. COPYRIGHT 2025 BY THE REALTORS® ASSOCIATION OF EDMONTON. ALL RIGHTS RESERVED. Trademarks are owned or controlled by the Canadian Real Estate Association (CREA) and identify real estate professionals who are members of CREA (REALTOR®, REALTORS®) and/or the quality of services they provide (MLS®, Multiple Listing Service®)

Listing information last updated on July 1st, 2025 at 12:02pm MDT