

\$275,000 - 9541 180a Street, Edmonton

MLS® #E4440355

\$275,000

3 Bedroom, 1.50 Bathroom, 1,081 sqft
Condo / Townhouse on 0.00 Acres

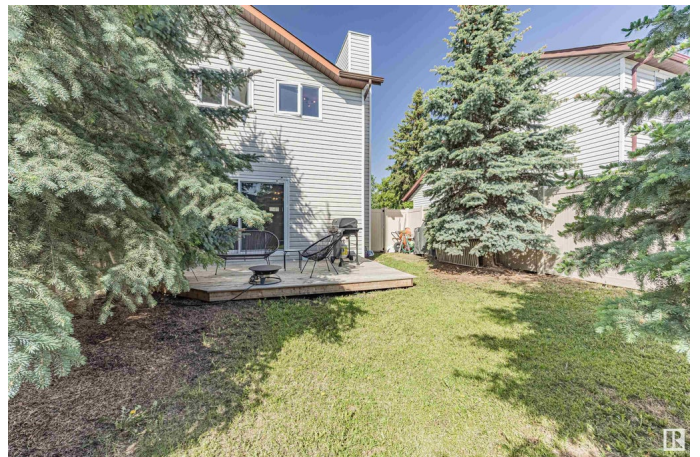
La Perle, Edmonton, AB

Pack your bags - your home is ready! This refreshed & well-maintained 3bed, 1.5bath, 1081 sqft + 517 sqft half-duplex condo in La Perle delivers unbeatable value. Step inside & feel right at home w/ laminate flooring, new lighting fixtures, warm & inviting refreshed kitchen featuring charming GEM cabinets & spacious dining area. The sun-drenched living room is the heart of the home â€” anchored by a cozy stone-faced fireplace & patio doors that lead to your PRIVATE, fully fenced backyard oasis surrounded by mature trees - tranquility & privacy! Convenient 2pc powder room is tucked away. Upstairs, youâ€™™ll find 3 generously sized bedrooms, including primary w/ dual closets + full 4-piece bath. The fully finished basement offers even more versatility w/ comfortable family room, plenty of storage & stackable laundry. This quiet, pet-friendly complex comes w/ low condo fees & major exterior upgrades already done â€” newer roof, windows, siding & vinyl fencing. Plus: parking for two on the driveway!

Built in 1979

Essential Information

MLS® #	E4440355
Price	\$275,000
Bedrooms	3



Bathrooms	1.50
Full Baths	1
Half Baths	1
Square Footage	1,081
Acres	0.00
Year Built	1979
Type	Condo / Townhouse
Sub-Type	Half Duplex
Style	2 Storey
Status	Active

Community Information

Address	9541 180a Street
Area	Edmonton
Subdivision	La Perle
City	Edmonton
County	ALBERTA
Province	AB
Postal Code	T5T 2Z4

Amenities

Amenities	On Street Parking, Deck, Parking-Visitor
Parking Spaces	2
Parking	2 Outdoor Stalls, Front Drive Access, No Garage, Parking Pad Cement/Paved

Interior

Appliances	Dishwasher-Built-In, Dryer, Microwave Hood Fan, Refrigerator, Stove-Electric, Washer, Window Coverings
Heating	Forced Air-1, Natural Gas
Fireplace	Yes
Fireplaces	Stone Facing
Stories	3
Has Basement	Yes
Basement	Full, Finished

Exterior

Exterior	Wood, Vinyl
Exterior Features	Fenced, Landscaped, Level Land, Park/Reserve, Picnic Area,

Playground Nearby, Public Swimming Pool, Public Transportation,
Schools, Shopping Nearby

Roof	Asphalt Shingles
Construction	Wood, Vinyl
Foundation	Concrete Perimeter

Additional Information

Date Listed	June 4th, 2025
Days on Market	6
Zoning	Zone 20
Condo Fee	\$321

DATA IS DEEMED RELIABLE BUT IS NOT GUARANTEED ACCURATE BY THE REALTORS® ASSOCIATION OF EDMONTON. COPYRIGHT 2025 BY THE REALTORS® ASSOCIATION OF EDMONTON. ALL RIGHTS RESERVED. Trademarks are owned or controlled by the Canadian Real Estate Association (CREA) and identify real estate professionals who are members of CREA (REALTOR®, REALTORS®) and/or the quality of services they provide (MLS®, Multiple Listing Service®)

Listing information last updated on June 9th, 2025 at 10:47pm MDT