

## \$380,000 - 409 45 Inglewood Drive, St. Albert

MLS® #E4440230

**\$380,000**

2 Bedroom, 2.00 Bathroom, 1,019 sqft

Condo / Townhouse on 0.00 Acres

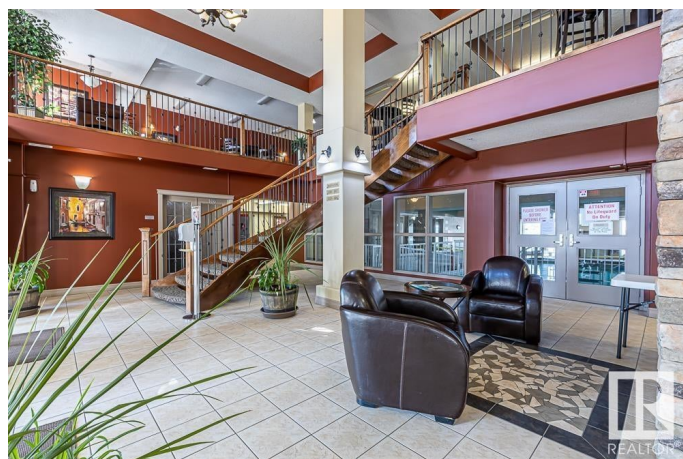
Inglewood (St. Albert), St. Albert, AB

This well-cared for condo offers comfort, convenience, and updates throughout. Featuring 2 bedrooms and 2 full bathrooms, the home includes a 2-year old A/C system, new kitchen appliances, and updated countertops, sinks and faucets in both the kitchen and bathrooms. Enjoy plenty of storage space, a bright open layout, and a quiet balcony overlooking the courtyard - A perfect spot to unwind. Located right next to the elevator for easy access. Located in a well-maintained 35+ adult building that is pet friendly (with board approval) the building offers a range of amenities including a indoor pool, sauna, exercise room, workshop and a car wash bay. Situated within walking distance to the Sturgeon Hospital, transit, and local conveniences. A perfect choice for downsizers, retirees, or those seeking move-in-ready home in a prime location.

Built in 2008

### Essential Information

MLS® #	E4440230
Price	\$380,000
Bedrooms	2
Bathrooms	2.00
Full Baths	2
Square Footage	1,019



Acres	0.00
Year Built	2008
Type	Condo / Townhouse
Sub-Type	Lowrise Apartment
Style	Single Level Apartment
Status	Active

### Community Information

Address	409 45 Inglewood Drive
Area	St. Albert
Subdivision	Inglewood (St. Albert)
City	St. Albert
County	ALBERTA
Province	AB
Postal Code	T8N 0B6

### Amenities

Amenities	Car Wash, Exercise Room, Hot Tub, Pool-Indoor, Social Rooms, Workshop
Parking	Heated, Underground
Has Pool	Yes

### Interior

Interior Features	ensuite bathroom
Appliances	Air Conditioning-Central, Dishwasher-Built-In, Garage Opener, Hood Fan, Refrigerator, Stacked Washer/Dryer, Stove-Electric
Heating	Hot Water, Natural Gas
# of Stories	4
Stories	4
Has Basement	Yes
Basement	None, No Basement

### Exterior

Exterior	Wood, Brick, Stucco
Exterior Features	Landscaped, Public Transportation, Schools, Shopping Nearby, View City
Roof	Asphalt Shingles
Construction	Wood, Brick, Stucco
Foundation	Concrete Perimeter

**Additional Information**

Date Listed	June 4th, 2025
Days on Market	8
Zoning	Zone 24
Condo Fee	\$642

DATA IS DEEMED RELIABLE BUT IS NOT GUARANTEED ACCURATE BY THE REALTORS® ASSOCIATION OF EDMONTON. COPYRIGHT 2025 BY THE REALTORS® ASSOCIATION OF EDMONTON. ALL RIGHTS RESERVED.Trademarks are owned or controlled by the Canadian Real Estate Association (CREA) and identify real estate professionals who are members of CREA (REALTOR®, REALTORS®) and/or the quality of services they provide (MLS®, Multiple Listing Service®)

Listing information last updated on June 13th, 2025 at 12:17am MDT