

\$380,000 - 9242 150 Street, Edmonton

MLS® #E4439567

\$380,000

0 Bedroom, 2.00 Bathroom,
Single Family on 0.00 Acres

Sherwood, Edmonton, AB

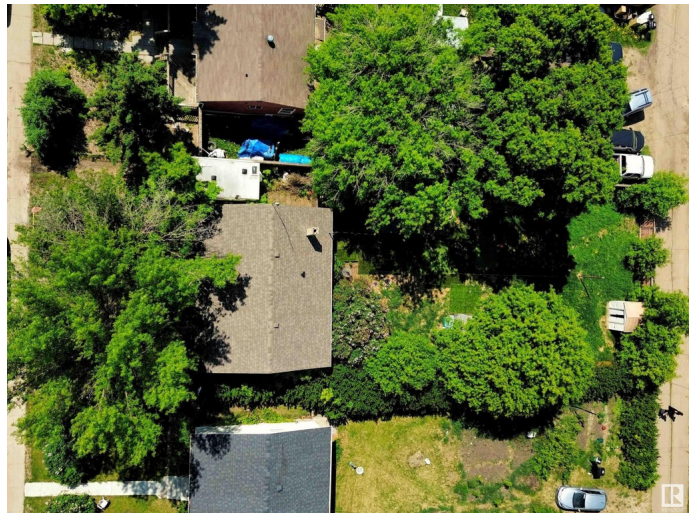
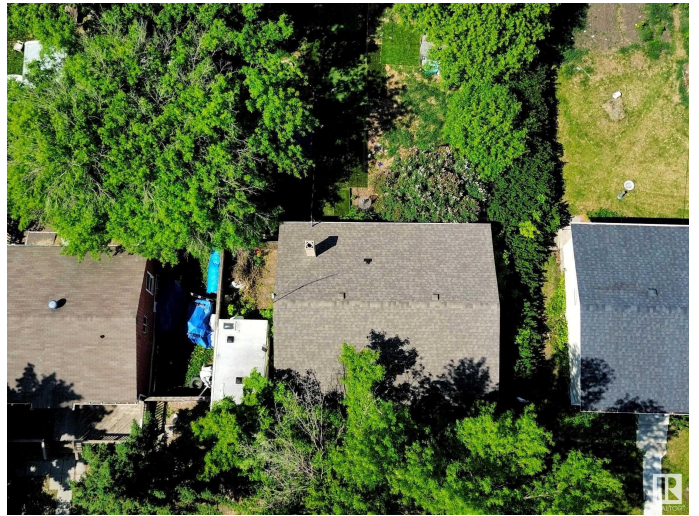
REDEVELOPMENT OPPORTUNITY in Sherwood! 50' x 148' lot - sub-dividable for 2 skinny lots, option for a suited duplex & garage suites, or beautiful lush treed lot for a future single family home. Prime location close to great schools, transit options & future LRT, Candy Cane Lane, and some of the city's best running & bike trails. Great value in a beautiful neighbourhood!

Essential Information

MLS® #	E4439567
Price	\$380,000
Bathrooms	2.00
Full Baths	2
Acres	0.00
Type	Single Family
Sub-Type	Vacant Lot/Land
Style	Bungalow
Status	Active

Community Information

Address	9242 150 Street
Area	Edmonton
Subdivision	Sherwood
City	Edmonton
County	ALBERTA



Province AB
Postal Code T5R 1G3

Amenities

Parking No Garage

Interior

Heating Natural Gas

Exterior

Exterior Features Back Lane, Flat Site, Landscaped, Schools

Additional Information

Date Listed May 30th, 2025
Days on Market 13
Zoning Zone 22

DATA IS DEEMED RELIABLE BUT IS NOT GUARANTEED ACCURATE BY THE REALTORS® ASSOCIATION OF EDMONTON. COPYRIGHT 2025 BY THE REALTORS® ASSOCIATION OF EDMONTON. ALL RIGHTS RESERVED.Trademarks are owned or controlled by the Canadian Real Estate Association (CREA) and identify real estate professionals who are members of CREA (REALTOR®, REALTORS®) and/or the quality of services they provide (MLS®, Multiple Listing Service®)
Listing information last updated on June 13th, 2025 at 12:03am MDT