

\$474,900 - 16703 30 Avenue, Edmonton

MLS® #E4439550

\$474,900

3 Bedroom, 2.50 Bathroom, 1,536 sqft

Single Family on 0.00 Acres

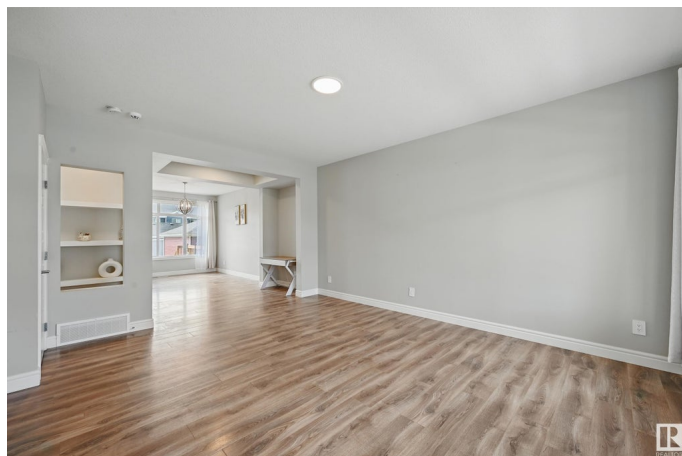
Glenridding Ravine, Edmonton, AB

Welcome to Glenridding Ravine! This 2 STOREY offers Elegance and Magnificent Living Spaces. You will be wowed upon entering the Foyer, Open Concept Floor Plan, 9 Foot Ceiling's, Pot Lights, Spacious Living room, Vinyl Plank Flooring and Large Dining area. The Kitchen is Outstanding from every angle, showcases Tasteful Finishes such as Custom Cabinets, Quartz Countertops w/ Tiled Backsplash, Stainless Steel Applianceâ€™s, and a Large Island. The Upstairs you will find 3 Generous Sized Bedrooms. The Master Bedroom with a Luxurious 4 Piece Ensuite Bathroom with Shower and a Walk-In Closet. 2 Large Bedrooms with a Full Bath and Spacious Laundry Room. The Basement has a SEPARATE Entrance for your Future Legal Secondary Suite. The Basement awaits your finishing touches. The Large yard is perfect for family gatherings. Close to Major Amenities, Schools, Shopping and the Anthony Henday.

Built in 2022

Essential Information

MLS® #	E4439550
Price	\$474,900
Bedrooms	3
Bathrooms	2.50
Full Baths	2



Half Baths	1
Square Footage	1,536
Acres	0.00
Year Built	2022
Type	Single Family
Sub-Type	Detached Single Family
Style	2 Storey
Status	Active

Community Information

Address	16703 30 Avenue
Area	Edmonton
Subdivision	Glenridding Ravine
City	Edmonton
County	ALBERTA
Province	AB
Postal Code	T6W 4P9

Amenities

Amenities	See Remarks
Parking	See Remarks

Interior

Interior Features	ensuite bathroom
Appliances	Dishwasher-Built-In, Dryer, Refrigerator, Stove-Electric, Washer, Window Coverings
Heating	Forced Air-1, Natural Gas
Stories	2
Has Basement	Yes
Basement	Full, Unfinished

Exterior

Exterior	Wood, Vinyl
Exterior Features	Schools, Shopping Nearby
Roof	Asphalt Shingles
Construction	Wood, Vinyl
Foundation	Concrete Perimeter

Additional Information

Date Listed May 30th, 2025

Days on Market 11

Zoning Zone 56

DATA IS DEEMED RELIABLE BUT IS NOT GUARANTEED ACCURATE BY THE REALTORS® ASSOCIATION OF EDMONTON. COPYRIGHT 2025 BY THE REALTORS® ASSOCIATION OF EDMONTON. ALL RIGHTS RESERVED. Trademarks are owned or controlled by the Canadian Real Estate Association (CREA) and identify real estate professionals who are members of CREA (REALTOR®, REALTORS®) and/or the quality of services they provide (MLS®, Multiple Listing Service®)

Listing information last updated on June 9th, 2025 at 11:17pm MDT