

## \$595,000 - 1939 210 Street, Edmonton

MLS® #E4437311

**\$595,000**

5 Bedroom, 4.00 Bathroom, 1,583 sqft

Single Family on 0.00 Acres

Stillwater, Edmonton, AB

Investors and savvy homebuyers â€™ welcome to your ideal property in the thriving community of Stillwater! This brand-new, fully detached home offers exceptional versatility with a TWO-BEDROOM LEGAL SUITE, a MAIN-FLOOR FULL BATHROOM, and a MAIN-FLOOR HOME OFFICE â€™ perfect for working from home or accommodating an elderly family member with ease. Upstairs, you'll find three spacious bedrooms, two full bathrooms, including a luxurious 5-piece ensuite, and a generous walk-in closet in the primary suite. A bonus room and a convenient upstairs laundry complete the second floor.

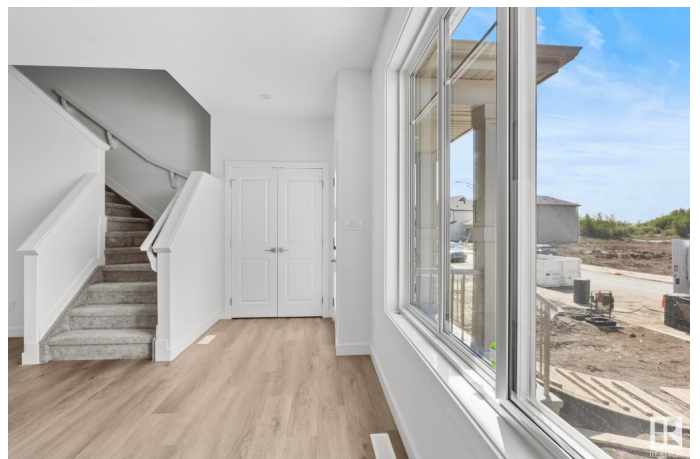
The legal basement suite features two additional bedrooms, a separate side entrance, and a full kitchen and bath â€™ ideal for long-term rental income or Airbnb potential.

Located just minutes from Costco, River Cree Resort & Casino, and West Edmonton Mall, this home combines smart investment potential with modern family living.

Built in 2025

### Essential Information

MLS® #	E4437311
Price	\$595,000
Bedrooms	5
Bathrooms	4.00



Full Baths	4
Square Footage	1,583
Acres	0.00
Year Built	2025
Type	Single Family
Sub-Type	Detached Single Family
Style	2 Storey
Status	Active

### Community Information

Address	1939 210 Street
Area	Edmonton
Subdivision	Stillwater
City	Edmonton
County	ALBERTA
Province	AB
Postal Code	T6M 3H5

### Amenities

Amenities	Carbon Monoxide Detectors, Ceiling 9 ft., Hot Water Instant, No Animal Home, No Smoking Home
Parking	Double Garage Detached

### Interior

Interior Features	ensuite bathroom
Appliances	Garage Control, Garage Opener, Builder Appliance Credit
Heating	Forced Air-1, Natural Gas
Fireplace	Yes
Fireplaces	Insert
Stories	3
Has Suite	Yes
Has Basement	Yes
Basement	Full, Finished

### Exterior

Exterior	Wood, Vinyl
Exterior Features	Flat Site, Level Land, Low Maintenance Landscape
Roof	Asphalt Shingles
Construction	Wood, Vinyl

Foundation                      Concrete Perimeter

**School Information**

Elementary                      Ormsby School  
Middle                              S. Bruce Smith School  
High                                 Jasper Place School

**Additional Information**

Date Listed                      May 19th, 2025  
Days on Market                26  
Zoning                              Zone 57

DATA IS DEEMED RELIABLE BUT IS NOT GUARANTEED ACCURATE BY THE REALTORS® ASSOCIATION OF EDMONTON. COPYRIGHT 2025 BY THE REALTORS® ASSOCIATION OF EDMONTON. ALL RIGHTS RESERVED.Trademarks are owned or controlled by the Canadian Real Estate Association (CREA) and identify real estate professionals who are members of CREA (REALTOR®, REALTORS®) and/or the quality of services they provide (MLS®, Multiple Listing Service®)  
Listing information last updated on June 13th, 2025 at 9:48pm MDT