

# **\$850,000 - 10651 68 Ave And 6711 107 Street Avenue, Edmonton**

---

MLS® #E4435617

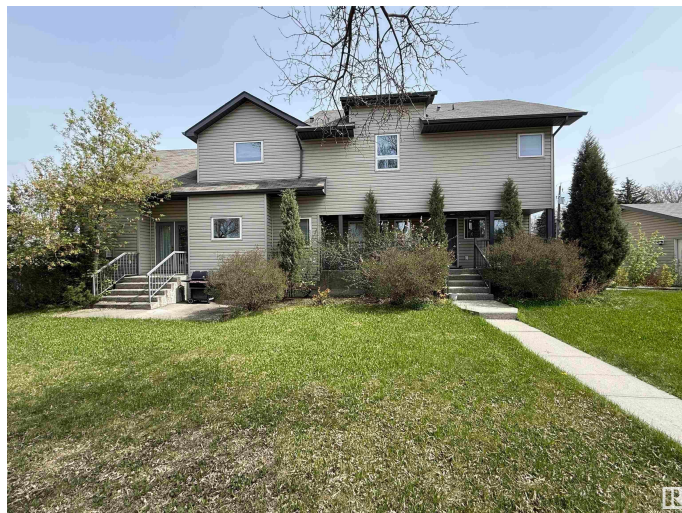
**\$850,000**

6 Bedroom, 6.50 Bathroom, 3,024 sqft

Single Family on 0.00 Acres

Allendale, Edmonton, AB

Fantastic full side-by-side duplex on a beautiful tree-lined street, perfect for investors or multi-generational living! One side features vinyl plank flooring, a bright and spacious kitchen with a huge pantry, a main floor den, a half bath, and charming built-ins. Upstairs, three bedrooms each have spacious closets and 4-piece ensuites. Tons of natural light throughout, with a fully finished basement space that can be a family room or play space. The other side offers hardwood flooring, a cozy fireplace, a built-in hutch, a bright kitchen with a cooktop and wall oven, a huge primary bedroom with dual closets, main floor laundry, and a 3-pc bath. Upstairs boasts a large loft area, a 3-pc bath, and extra storage. The fully finished basement includes another kitchen, bedroom, living room, and full bath. A detached double garage, wrap-around patio, and mature landscaping complete this unique property!



Built in 2004

## **Essential Information**

MLS® #	E4435617
Price	\$850,000
Bedrooms	6
Bathrooms	6.50

Full Baths	6
Half Baths	1
Square Footage	3,024
Acres	0.00
Year Built	2004
Type	Single Family
Sub-Type	Duplex Side By Side
Style	2 Storey
Status	Active

### Community Information

Address	10651 68 Ave And 6711 107 Street Avenue
Area	Edmonton
Subdivision	Allendale
City	Edmonton
County	ALBERTA
Province	AB
Postal Code	T6H 2B3

### Amenities

Amenities	Off Street Parking, On Street Parking, Detectors Smoke, No Animal Home, No Smoking Home
Parking Spaces	3
Parking	Double Garage Detached

### Interior

Interior Features	ensuite bathroom
Appliances	Oven-Built-In, Stove-Electric, Dryer-Two, Refrigerators-Two, Washers-Two, Dishwasher-Two
Heating	Forced Air-1, Natural Gas
Stories	3
Has Basement	Yes
Basement	Full, Finished

### Exterior

Exterior	Wood, Vinyl
Exterior Features	Corner Lot, Landscaped, Public Transportation, Schools, Shopping Nearby
Roof	Asphalt Shingles

Construction	Wood, Vinyl
Foundation	Concrete Perimeter

**Additional Information**

Date Listed	May 8th, 2025
Days on Market	35
Zoning	Zone 15

DATA IS DEEMED RELIABLE BUT IS NOT GUARANTEED ACCURATE BY THE REALTORS® ASSOCIATION OF EDMONTON. COPYRIGHT 2025 BY THE REALTORS® ASSOCIATION OF EDMONTON. ALL RIGHTS RESERVED.Trademarks are owned or controlled by the Canadian Real Estate Association (CREA) and identify real estate professionals who are members of CREA (REALTOR®, REALTORS®) and/or the quality of services they provide (MLS®, Multiple Listing Service®)

Listing information last updated on June 13th, 2025 at 2:02am MDT