

\$675,000 - 15659 16 Avenue, Edmonton

MLS® #E4435521

\$675,000

3 Bedroom, 2.50 Bathroom, 2,132 sqft

Single Family on 0.00 Acres

Glenridding Ravine, Edmonton, AB

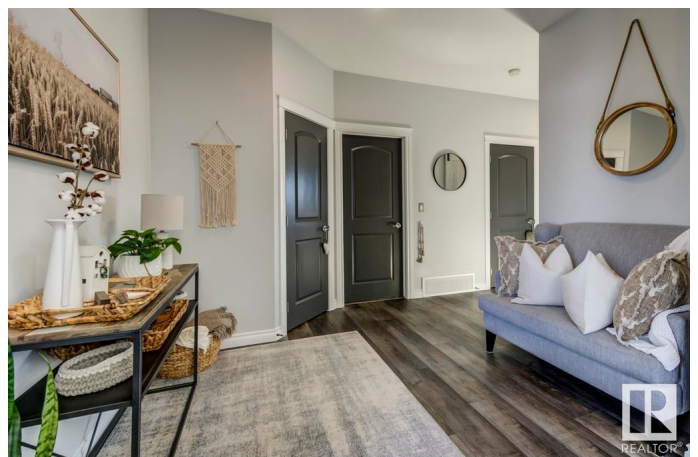
Amazing opportunity to own a stunning Parkwood Master built home. Enjoy a coffee on your south-facing maintenance free deck. Spectacular views backing treed RAVINE & professionally landscaped yard, complete w/ retractable motorized awning. This home is noticeably different than others. A Cookâ€™s dream kitchen w/ upgraded stainless appliances including induction stove, dual oven, chefâ€™s fan, bar fridge, quartz counters & under cabinet lighting. Walk thru pantry w/ custom barn door, upright freezer & solid shelving. Cozy living room w/ gas F/P, mantle & tile surround. Spacious mud room w/ shiplap detailing. Main floor boasts luxury vinyl plank. Iron spindled railing leading to upper level. Primary bedroom has a true spa-inspired ensuite w/ dual sinks, make-up counter, oversized shower & floating tub for ultimate relaxation. Walk-in closet completed by California Closets. Upper laundry room w/ cabinets & appliance pedestals. This home has is all A/C, hot water on demand, and quality window coverings.

Built in 2019

Essential Information

MLS® # E4435521

Price \$675,000



Bedrooms	3
Bathrooms	2.50
Full Baths	2
Half Baths	1
Square Footage	2,132
Acres	0.00
Year Built	2019
Type	Single Family
Sub-Type	Detached Single Family
Style	2 Storey
Status	Active

Community Information

Address	15659 16 Avenue
Area	Edmonton
Subdivision	Glenridding Ravine
City	Edmonton
County	ALBERTA
Province	AB
Postal Code	T6W 4S2

Amenities

Amenities	Air Conditioner, Ceiling 9 ft., Closet Organizers, Deck, Detectors Smoke, Hot Water Tankless, Vinyl Windows
Parking Spaces	4
Parking	Double Garage Attached

Interior

Interior Features	ensuite bathroom
Appliances	Air Conditioning-Central, Dishwasher-Built-In, Dryer, Fan-Ceiling, Freezer, Garage Control, Garage Opener, Hood Fan, Oven-Microwave, Refrigerator, Washer, Window Coverings, Wine/Beverage Cooler, Stove-Induction
Heating	Forced Air-1, Natural Gas
Fireplace	Yes
Fireplaces	Mantel, Tile Surround
Stories	2
Has Basement	Yes
Basement	Full, Unfinished

Exterior

Exterior	Wood, Stucco, Vinyl
Exterior Features	Backs Onto Park/Trees, Fenced, Fruit Trees/Shrubs, Golf Nearby, Landscaped, Playground Nearby, Public Transportation, Shopping Nearby
Roof	Asphalt Shingles
Construction	Wood, Stucco, Vinyl
Foundation	Concrete Perimeter

Additional Information

Date Listed	May 9th, 2025
Days on Market	36
Zoning	Zone 56

DATA IS DEEMED RELIABLE BUT IS NOT GUARANTEED ACCURATE BY THE REALTORS® ASSOCIATION OF EDMONTON. COPYRIGHT 2025 BY THE REALTORS® ASSOCIATION OF EDMONTON. ALL RIGHTS RESERVED.Trademarks are owned or controlled by the Canadian Real Estate Association (CREA) and identify real estate professionals who are members of CREA (REALTOR®, REALTORS®) and/or the quality of services they provide (MLS®, Multiple Listing Service®)

Listing information last updated on June 13th, 2025 at 11:47pm MDT