

\$250,000 - 338 1520 Hammond Gate Gate, Edmonton

MLS® #E4434864

\$250,000

2 Bedroom, 2.00 Bathroom, 857 sqft

Condo / Townhouse on 0.00 Acres

The Hamptons, Edmonton, AB

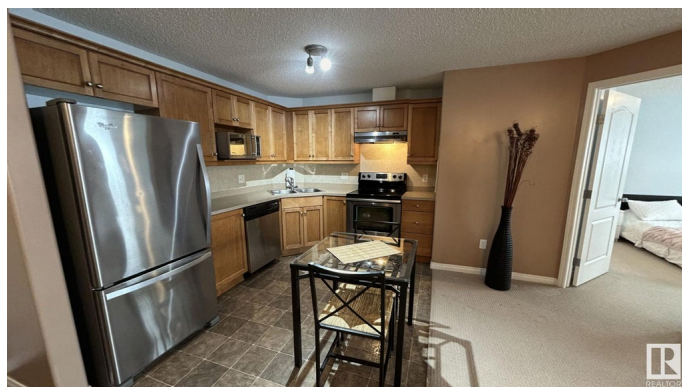
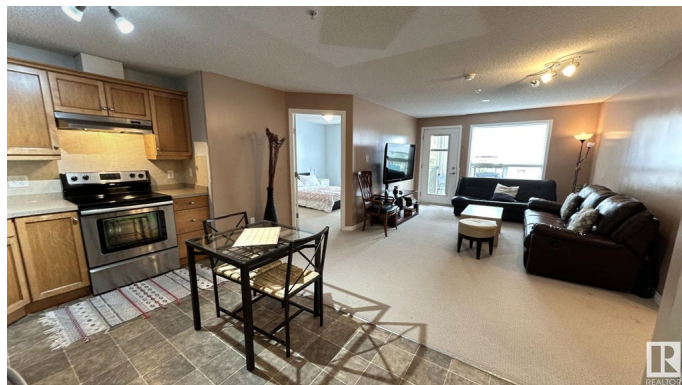
Welcome Home to Park Place South Hampton and this fabulous 2 bedroom and 2 bathroom condo. EXCELLENT CONDITION. WELL MAINTAINED unit in the prestigious community of Hamptons! The kitchen is open to the living room . The living room is good sized with a large window, and garden patio door making the room light and spacious open out onto a PRIVATE Balcony that allows plenty of natural light into the unit. The primary bedroom is spacious with a large walk through closet and a 4pc ensuite. The second bedroom has large window that allows lots of light into the room. The storage room is massive with plenty of room your laundry plus so much more. TWO titled parking stall including one heated underground and one outdoor stall with electricity. Park Place South Hamptons features 3 elevator for your convenience, a social room and on site property management. Conveniently located close to the shopping, WEM, Hospital, transit and with easy access to the Anthony Henday for an easy commute.

Built in 2008

Essential Information

MLS® # E4434864

Price \$250,000



Bedrooms	2
Bathrooms	2.00
Full Baths	2
Square Footage	857
Acres	0.00
Year Built	2008
Type	Condo / Townhouse
Sub-Type	Lowrise Apartment
Style	Single Level Apartment
Status	Active

Community Information

Address	338 1520 Hammond Gate Gate
Area	Edmonton
Subdivision	The Hamptons
City	Edmonton
County	ALBERTA
Province	AB
Postal Code	T6M 0J4

Amenities

Amenities	No Animal Home, No Smoking Home
Parking	2 Outdoor Stalls, Heated, Parkade

Interior

Interior Features	ensuite bathroom
Appliances	Dishwasher-Built-In, Dryer, Freezer, Oven-Microwave, Stove-Electric, Washer
Heating	In Floor Heat System, Natural Gas
# of Stories	4
Stories	1
Has Basement	Yes
Basement	None, No Basement

Exterior

Exterior	Wood, Stucco
Exterior Features	Airport Nearby, Golf Nearby, Landscaped, Playground Nearby, Public Swimming Pool, Public Transportation, Schools, Shopping Nearby
Roof	Asphalt Shingles

Construction	Wood, Stucco
Foundation	Concrete Perimeter

Additional Information

Date Listed	May 7th, 2025
Days on Market	34
Zoning	Zone 58
Condo Fee	\$497

DATA IS DEEMED RELIABLE BUT IS NOT GUARANTEED ACCURATE BY THE REALTORS® ASSOCIATION OF EDMONTON. COPYRIGHT 2025 BY THE REALTORS® ASSOCIATION OF EDMONTON. ALL RIGHTS RESERVED.Trademarks are owned or controlled by the Canadian Real Estate Association (CREA) and identify real estate professionals who are members of CREA (REALTOR®, REALTORS®) and/or the quality of services they provide (MLS®, Multiple Listing Service®)

Listing information last updated on June 10th, 2025 at 12:32am MDT