

\$2,590,000 - 10514 134 Street, Edmonton

MLS® #E4434157

\$2,590,000

5 Bedroom, 5.50 Bathroom, 3,290 sqft

Single Family on 0.00 Acres

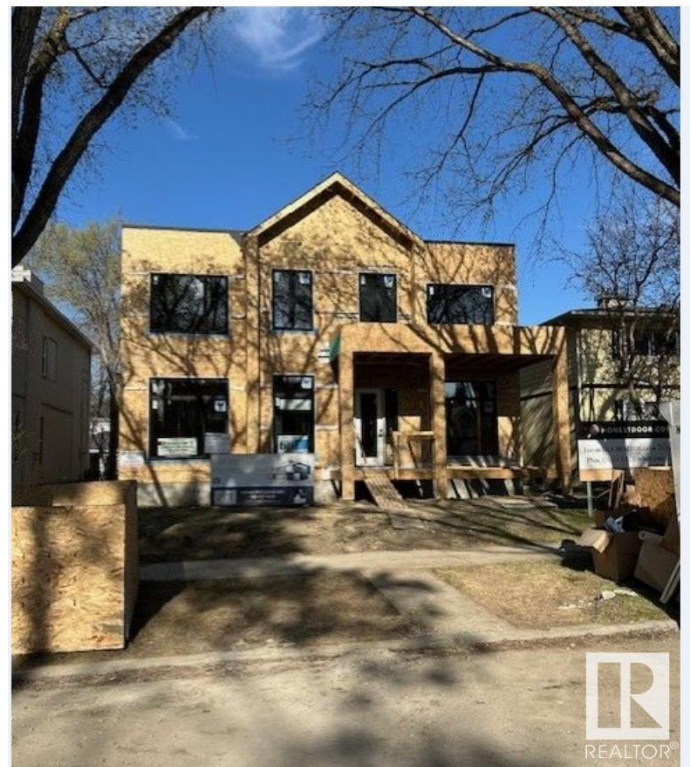
Glenora, Edmonton, AB

This stunning custom home, located on one of the most beautiful tree-lined streets in the historic community of Glenora, just steps from the river valley. With nearly 5,000 sq. ft. of developed space, designed by Studio Enda and built by Ashton Homes, every detail was curated for both function and style. This home features rich hardwood flooring, stunning double island kitchen, double dishwasher's, a walkthrough butler's pantry, and a spacious mudroom with a dedicated dog wash. Upstairs, you'll find four generous bedrooms, each with its own full ensuite. The primary suite features a steam shower and two extraordinarily large closets including a massive stylish women's closet. With five bedrooms and six bathrooms and a gym. The home includes double sets of premium laundry appliances. Accent walls and custom millwork. Outside, the west-facing backyard and patio will provide the perfect setting for entertaining or unwinding. A large triple garage offers ample space for vehicles and storage. Rare find!

Built in 1948

Essential Information

MLS® #	E4434157
Price	\$2,590,000



Bedrooms	5
Bathrooms	5.50
Full Baths	5
Half Baths	1
Square Footage	3,290
Acres	0.00
Year Built	1948
Type	Single Family
Sub-Type	Detached Single Family
Style	2 Storey
Status	Active

Community Information

Address	10514 134 Street
Area	Edmonton
Subdivision	Glenora
City	Edmonton
County	ALBERTA
Province	AB
Postal Code	T5N 2B5

Amenities

Amenities	Air Conditioner, Bar, Exercise Room, Exterior Walls- 2"x6", Hot Water Natural Gas, Insulation-Upgraded, Smart/Program. Thermostat, Recreation Room/Centre, Sauna; Swirlpool; Steam, Tennis Courts, Wet Bar, Natural Gas BBQ Hookup, 9 ft. Basement Ceiling
Parking Spaces	3
Parking	Triple Garage Detached

Interior

Interior Features	ensuite bathroom
Appliances	Air Conditioning-Central, Dishwasher-Built-In, See Remarks, Dryer-Two, Washers-Two
Heating	Forced Air-1, Natural Gas
Fireplace	Yes
Fireplaces	Insert
Stories	3
Has Basement	Yes
Basement	Full, Finished

Exterior

Exterior	Wood, See Remarks, Stucco, Hardie Board Siding
Exterior Features	See Remarks
Lot Description	50x140 ft
Roof	Asphalt Shingles
Construction	Wood, See Remarks, Stucco, Hardie Board Siding
Foundation	Concrete Perimeter

Additional Information

Date Listed	May 2nd, 2025
Days on Market	38
Zoning	Zone 11

DATA IS DEEMED RELIABLE BUT IS NOT GUARANTEED ACCURATE BY THE REALTORS® ASSOCIATION OF EDMONTON. COPYRIGHT 2025 BY THE REALTORS® ASSOCIATION OF EDMONTON. ALL RIGHTS RESERVED.Trademarks are owned or controlled by the Canadian Real Estate Association (CREA) and identify real estate professionals who are members of CREA (REALTOR®, REALTORS®) and/or the quality of services they provide (MLS®, Multiple Listing Service®)

Listing information last updated on June 9th, 2025 at 7:02pm MDT