

Courtesy Of Mark Barnes Of RE/MAX Elite

# \$239,900 - 160 Primrose Gardens Gardens, Edmonton

MLS® #E4432694

**\$239,900**

3 Bedroom, 1.50 Bathroom, 1,091 sqft  
Condo / Townhouse on 0.00 Acres

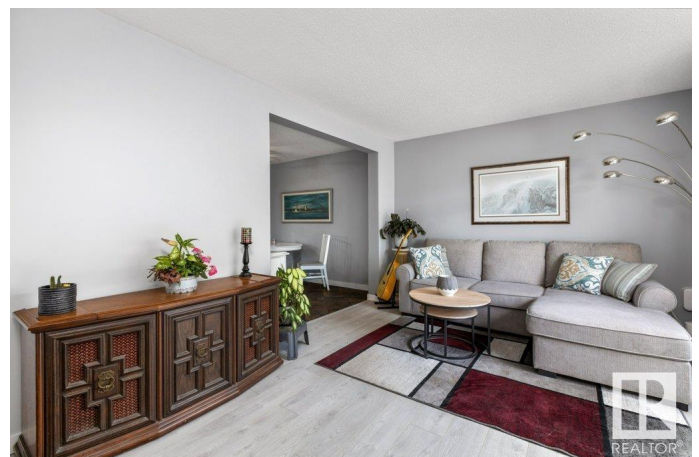
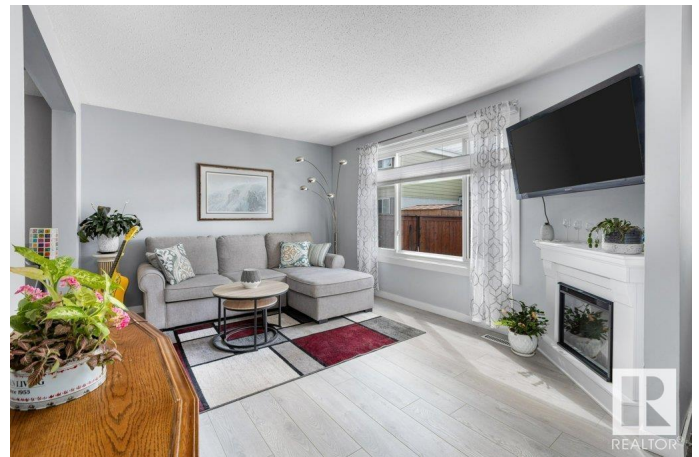
Aldergrove, Edmonton, AB

Welcome to Primrose Gardens! Renovated 3 Bedroom Home – Under \$240K! This beautifully updated townhouse offers incredible value for first-time buyers, investors, or anyone looking to break into the market. The bright and welcoming main floor features newer flooring and paint, a white kitchen, dedicated dining area, and a renovated 2-piece powder room. Large windows flood the space with natural light, and the back door leads to a private, sunny yard – perfect for pet owners or summer relaxing. Upstairs you’ll find three spacious bedrooms and a 4-piece bathroom. The fully finished basement offers a large rec room, perfect for the cozy nights in, ample storage, and laundry. Located in a convenient West End community, you’re just minutes from public transportation, schools, shopping, Misericordia Hospital, West Edmonton Mall, and the upcoming LRT line. Don’t miss this move in ready affordable gem!

Built in 1973

## Essential Information

MLS® #	E4432694
Price	\$239,900
Bedrooms	3
Bathrooms	1.50



Full Baths	1
Half Baths	1
Square Footage	1,091
Acres	0.00
Year Built	1973
Type	Condo / Townhouse
Sub-Type	Townhouse
Style	2 Storey
Status	Active

### **Community Information**

Address	160 Primrose Gardens Gardens
Area	Edmonton
Subdivision	Aldergrove
City	Edmonton
County	ALBERTA
Province	AB
Postal Code	T5T 0R1

### **Amenities**

Amenities	Parking-Visitor
Parking	Stall

### **Interior**

Appliances	Dishwasher-Built-In, Dryer, Hood Fan, Refrigerator, Stove-Electric, Washer
Heating	Forced Air-1, Natural Gas
Stories	3
Has Basement	Yes
Basement	Full, Finished

### **Exterior**

Exterior	Wood, Metal, Stucco
Exterior Features	Fenced, Landscaped, Playground Nearby, Public Transportation, Schools, Shopping Nearby
Roof	Asphalt Shingles
Construction	Wood, Metal, Stucco
Foundation	Concrete Perimeter

### **School Information**

Elementary	Aldergrove
Middle	Parkview
High	Jasper Place

### **Additional Information**

Date Listed	April 25th, 2025
Days on Market	3
Zoning	Zone 20
Condo Fee	\$335

DATA IS DEEMED RELIABLE BUT IS NOT GUARANTEED ACCURATE BY THE REALTORS® ASSOCIATION OF EDMONTON. COPYRIGHT 2025 BY THE REALTORS® ASSOCIATION OF EDMONTON. ALL RIGHTS RESERVED. Trademarks are owned or controlled by the Canadian Real Estate Association (CREA) and identify real estate professionals who are members of CREA (REALTOR®, REALTORS®) and/or the quality of services they provide (MLS®, Multiple Listing Service®)

Listing information last updated on April 28th, 2025 at 2:32am MDT