

Courtesy Of Steve P Kehoe Of 2% Realty Pro

## \$529,900 - 364 Griesbach School Road, Edmonton

MLS® #E4432492

**\$529,900**

3 Bedroom, 2.50 Bathroom, 1,914 sqft  
Single Family on 0.00 Acres

Griesbach, Edmonton, AB

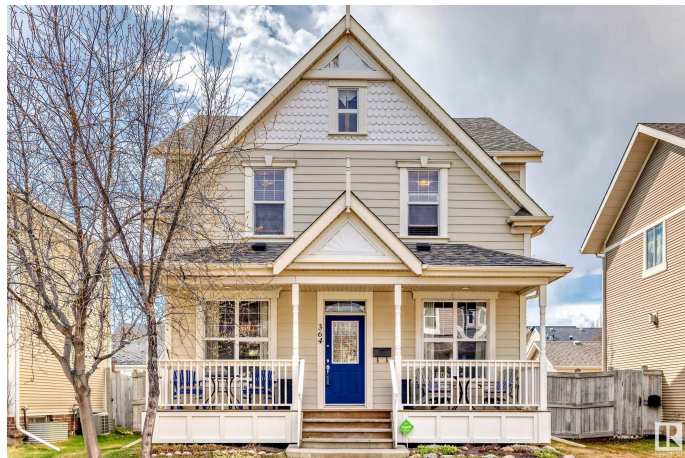
Welcome to this beautifully maintained 2-storey home located in the sought-after community of Griesbach! Step inside to discover rich hardwood floors that flow throughout the main level, leading you to a spacious kitchen complete with quartz countertops, a central island w/ breakfast bar, & sleek stainless steel appliances. The kitchen opens to a bright and cozy living room w/ a gas fireplace—your ideal spot to unwind. The main floor flex room is perfect for a home office or playroom & a formal dining room is perfect for hosting gatherings,. Upstairs, you’ll find three generous bedrooms, including a primary suite with ample closet space and a well-appointed ensuite. Outside, enjoy summer days in your large backyard featuring a 24' x 14' deck, perfect for barbecues & outdoor fun & a double detached garage. Additional updates include new shingles (2023) & a new water tank (2024) giving you peace of mind for years to come. Griesbach offers parks, schools, shopping, & quick access to major routes.

Built in 2007

### Essential Information

MLS® # E4432492

Price \$529,900



Bedrooms	3
Bathrooms	2.50
Full Baths	2
Half Baths	1
Square Footage	1,914
Acres	0.00
Year Built	2007
Type	Single Family
Sub-Type	Detached Single Family
Style	2 Storey
Status	Active

### **Community Information**

Address	364 Griesbach School Road
Area	Edmonton
Subdivision	Griesbach
City	Edmonton
County	ALBERTA
Province	AB
Postal Code	T5E 1Z8

### **Amenities**

Amenities	Deck, No Animal Home, No Smoking Home
Parking	Double Garage Detached

### **Interior**

Interior Features	ensuite bathroom
Appliances	Dishwasher-Built-In, Dryer, Freezer, Garage Control, Garage Opener, Microwave Hood Fan, Refrigerator, Stove-Electric, Washer, Window Coverings
Heating	Forced Air-1, Natural Gas
Fireplace	Yes
Fireplaces	Mantel
Stories	2
Has Basement	Yes
Basement	Full, Partially Finished

### **Exterior**

Exterior	Wood, Vinyl
----------	-------------

Exterior Features	Back Lane, Fenced, Landscaped, Playground Nearby, Schools, Shopping Nearby
Roof	Asphalt Shingles
Construction	Wood, Vinyl
Foundation	Slab

### **Additional Information**

Date Listed	April 24th, 2025
Days on Market	2
Zoning	Zone 27

DATA IS DEEMED RELIABLE BUT IS NOT GUARANTEED ACCURATE BY THE REALTORS® ASSOCIATION OF EDMONTON. COPYRIGHT 2025 BY THE REALTORS® ASSOCIATION OF EDMONTON. ALL RIGHTS RESERVED. Trademarks are owned or controlled by the Canadian Real Estate Association (CREA) and identify real estate professionals who are members of CREA (REALTOR®, REALTORS®) and/or the quality of services they provide (MLS®, Multiple Listing Service®)

Listing information last updated on April 26th, 2025 at 2:17am MDT