

Courtesy Of Denise A Royer Of Blackmore Real Estate

## \$699,900 - 10 Georgia Place, St. Albert

MLS® #E4432375

**\$699,900**

5 Bedroom, 3.00 Bathroom, 1,445 sqft  
Single Family on 0.00 Acres

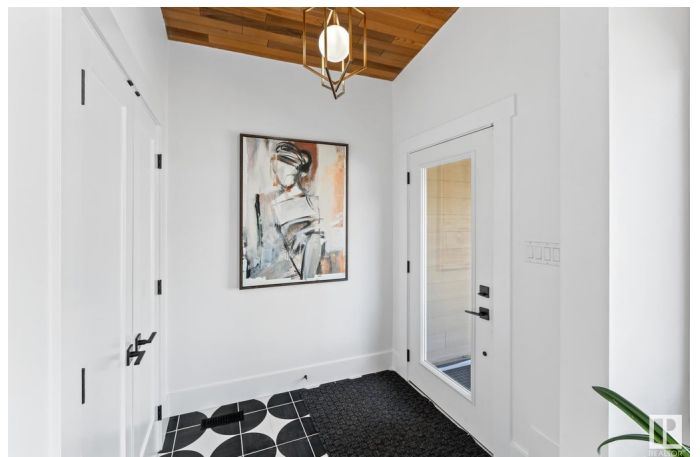
Grandin, St. Albert, AB

Like new on Georgia Place! This air conditioned 1450 sq.ft bungalow retains its original mid-century architectural lines, showcasing iconic design choices mixed with modern touches. Open front foyer features vintage inspired tile and leads to living room with vaulted cedar ceilings, statement wall of windows and simplistic colour palette choices. Gourmet kitchen boasts two toned cabinets, high end appliances, neutral stone tops with subtle veining pattern and quaint coffee/wine bar. Large primary suite with 3 piece ensuite updated with modern fixtures and retro tile designs. Two additional bedrooms and updated main 4 piece bathroom. Upper level laundry. Lower level is fully finished with 2 bedrooms, expansive family/media area and bath. All new landscaping, front and rear concrete poured patios. Nothing has been overlooked. Double attached 19.3X22.8 garage roughed in for heat. Cul-de-sac location steps to the ravine.

Built in 1972

### Essential Information

MLS® #	E4432375
Price	\$699,900
Bedrooms	5
Bathrooms	3.00



Full Baths	3
Square Footage	1,445
Acres	0.00
Year Built	1972
Type	Single Family
Sub-Type	Detached Single Family
Style	Bungalow
Status	Active

### **Community Information**

Address	10 Georgia Place
Area	St. Albert
Subdivision	Grandin
City	St. Albert
County	ALBERTA
Province	AB
Postal Code	T8N 1R6

### **Amenities**

Amenities	Air Conditioner, Deck, No Smoking Home, Vaulted Ceiling, Vinyl Windows
Parking Spaces	4
Parking	Double Garage Attached, Insulated

### **Interior**

Interior Features	ensuite bathroom
Appliances	Air Conditioning-Central, Dishwasher-Built-In, Dryer, Hood Fan, Oven-Microwave, Stove-Gas, Washer, Window Coverings, Refrigerators-Two
Heating	Forced Air-1, Natural Gas
Fireplace	Yes
Fireplaces	Mantel
Stories	2
Has Basement	Yes
Basement	Full, Finished

### **Exterior**

Exterior	Wood, Stucco, Hardie Board Siding
Exterior Features	Fenced, Landscaped, Playground Nearby, Public Swimming Pool, Public

Transportation, Schools, Shopping Nearby

Roof Asphalt Shingles

Construction Wood, Stucco, Hardie Board Siding

Foundation Block

### **Additional Information**

Date Listed April 24th, 2025

Days on Market 2

Zoning Zone 24

DATA IS DEEMED RELIABLE BUT IS NOT GUARANTEED ACCURATE BY THE REALTORS® ASSOCIATION OF EDMONTON. COPYRIGHT 2025 BY THE REALTORS® ASSOCIATION OF EDMONTON. ALL RIGHTS RESERVED. Trademarks are owned or controlled by the Canadian Real Estate Association (CREA) and identify real estate professionals who are members of CREA (REALTOR®, REALTORS®) and/or the quality of services they provide (MLS®, Multiple Listing Service®)

Listing information last updated on April 26th, 2025 at 3:32am MDT