

## \$199,900 - 1204 330 Clareview Station Drive, Edmonton

MLS® #E4432100

**\$199,900**

2 Bedroom, 2.00 Bathroom, 1,119 sqft

Condo / Townhouse on 0.00 Acres

Clareview Town Centre, Edmonton, AB

1120 sq ft on 2nd level, 2 spacious bedrooms, 2 bathrooms condo unit in Clareview Junction. The primary bedroom boasts 2 closets one being a walk-through closet and a private ensuite, the second bedroom is perfect for guests, a home office, or growing families, open concept living area with superb size kitchen and dining area and patio door to balcony. Convenient in-suite laundry with generous storage space. One title energised parking stalls, heat and water included in condo fees. Located close to retail shopping center (Superstore Etc) , the emergency Northeast hospital and to Anthony Henday and just steps from the Clareview LRT station, bus terminal only yards away, ideal for student going to Nait or University, or anyone that works downtown or doesn't drive. The complex also offers meeting/party room and has a sizable fitness room with excellent equipment plus is very close to Clareview Recreation Center, GoodLife Fitness. Wont last

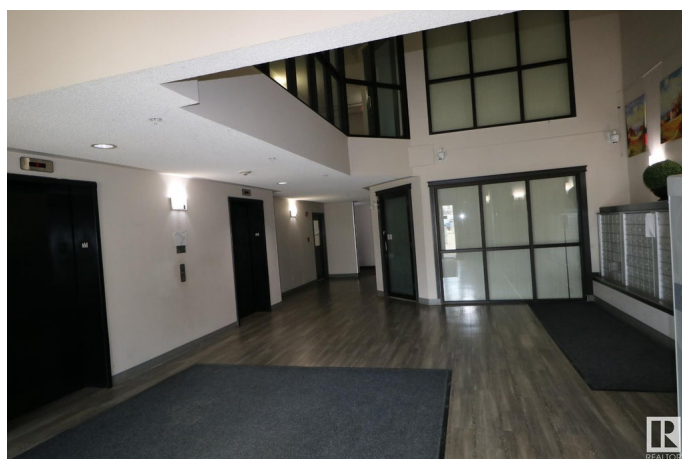
Built in 2007

### Essential Information

MLS® # E4432100

Price \$199,900

Bedrooms 2



Bathrooms	2.00
Full Baths	2
Square Footage	1,119
Acres	0.00
Year Built	2007
Type	Condo / Townhouse
Sub-Type	Lowrise Apartment
Style	Single Level Apartment
Status	Active

### Community Information

Address	1204 330 Clareview Station Drive
Area	Edmonton
Subdivision	Clareview Town Centre
City	Edmonton
County	ALBERTA
Province	AB
Postal Code	T5Y 0E6

### Amenities

Amenities	Off Street Parking, Detectors Smoke, Parking-Plug-Ins, Parking-Visitor, Storage-In-Suite
Parking	Stall

### Interior

Interior Features	ensuite bathroom
Appliances	Dishwasher-Built-In, Dryer, Refrigerator, Stove-Electric, Washer, Window Coverings
Heating	Hot Water, Natural Gas
# of Stories	4
Stories	4
Has Basement	Yes
Basement	None, No Basement

### Exterior

Exterior	Wood, Brick, Stone, Vinyl
Exterior Features	Public Transportation
Roof	Asphalt Shingles
Construction	Wood, Brick, Stone, Vinyl

Foundation                      Slab

**Additional Information**

Date Listed                      April 19th, 2025  
Days on Market                9  
Zoning                              Zone 35  
Condo Fee                        \$589

DATA IS DEEMED RELIABLE BUT IS NOT GUARANTEED ACCURATE BY THE REALTORS® ASSOCIATION OF EDMONTON. COPYRIGHT 2025 BY THE REALTORS® ASSOCIATION OF EDMONTON. ALL RIGHTS RESERVED.Trademarks are owned or controlled by the Canadian Real Estate Association (CREA) and identify real estate professionals who are members of CREA (REALTOR®, REALTORS®) and/or the quality of services they provide (MLS®, Multiple Listing Service®)  
Listing information last updated on April 28th, 2025 at 2:17am MDT