

\$149,700 - 106 4810 Mill Woods, Edmonton

MLS® #E4430189

\$149,700

3 Bedroom, 2.00 Bathroom, 1,251 sqft
Condo / Townhouse on 0.00 Acres

Pollard Meadows, Edmonton, AB

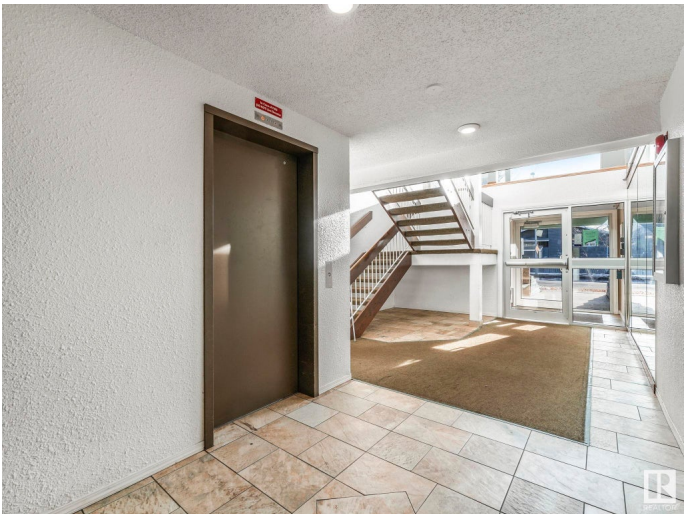
Whether you're searching for a smart rental property or your next home, this spacious main-floor unit has you covered. Boasting 3 large bedrooms and 2 full bathrooms, it offers both comfort and practicality. Step out onto your private, fenced balcony – a perfect spot to unwind or host guests. Ideally situated close to Sikh Temple, major bus routes, schools, and shopping, this home delivers unbeatable everyday convenience. Donâ€™t miss your chance to own this versatile, well-located gem!

Built in 1981

Essential Information

MLS® #	E4430189
Price	\$149,700
Bedrooms	3
Bathrooms	2.00
Full Baths	2
Square Footage	1,251
Acres	0.00
Year Built	1981
Type	Condo / Townhouse
Sub-Type	Lowrise Apartment
Style	Single Level Apartment
Status	Active

Community Information



Address	106 4810 Mill Woods
Area	Edmonton
Subdivision	Pollard Meadows
City	Edmonton
County	ALBERTA
Province	AB
Postal Code	T6L 5N9

Amenities

Amenities	No Animal Home, No Smoking Home, See Remarks
Parking	Stall

Interior

Interior Features	ensuite bathroom
Appliances	Dishwasher-Built-In, Refrigerator, Stove-Electric
Heating	Hot Water, Water
# of Stories	4
Stories	1
Has Basement	Yes
Basement	None, No Basement

Exterior

Exterior	Wood
Exterior Features	Paved Lane, Public Transportation, Schools, Shopping Nearby
Roof	Asphalt Shingles
Construction	Wood
Foundation	Concrete Perimeter

Additional Information

Date Listed	April 10th, 2025
Days on Market	18
Zoning	Zone 29
Condo Fee	\$714

DATA IS DEEMED RELIABLE BUT IS NOT GUARANTEED ACCURATE BY THE REALTORS® ASSOCIATION OF EDMONTON. COPYRIGHT 2025 BY THE REALTORS® ASSOCIATION OF EDMONTON. ALL RIGHTS RESERVED. Trademarks are owned or controlled by the Canadian Real Estate Association (CREA) and identify real estate professionals who are members of CREA (REALTOR®, REALTORS®) and/or the quality of services they provide (MLS®, Multiple Listing Service®)

Listing information last updated on April 28th, 2025 at 8:32am MDT