

\$899,800 - 948 Rice Road, Edmonton

MLS® #E4429990

\$899,800

3 Bedroom, 3.50 Bathroom, 2,230 sqft

Single Family on 0.00 Acres

Rhatigan Ridge, Edmonton, AB

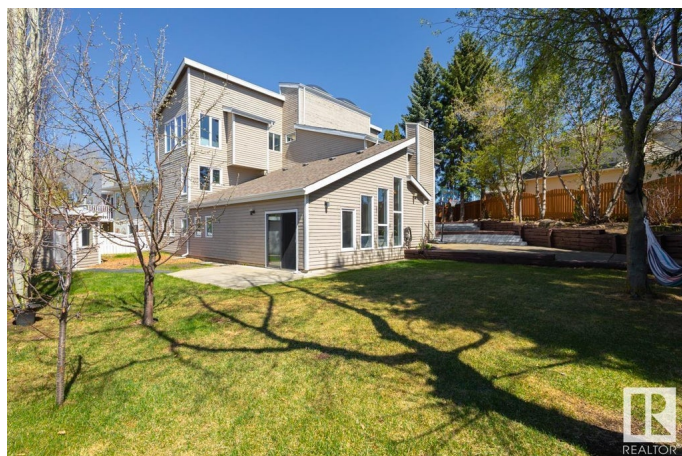
Absolutely stunning! Unique & architecturally designed 2 storey masterpiece in a quiet keyhole location in west Rhatigan Ridge. WALKOUT w/ an indoor SWIMMING POOL & A/C! 9,300+ sqft pie lot w/ SOUTHWEST backyard. Over 3,100+ sqft living space, 3 bedrooms, 3.5 baths, 3 living/family rooms, 2 wood burning F/P & a wet bar. Tons of windows w/ abundant natural light. Breathtaking high ceiling at foyer. Living rm has a sloped cedar ceiling and an office area. Kitchen has loads of oak cabinetry, B/I oven, new fridge & induction cooktop. Formal dining or a 2nd living rm. Upstairs the HUGE primary bdrm is a retreat w/ 5pc ensuite & soaker tub. TWO more bdrm & a 5pc bath. Spinning spiral stairs lead to the walkout bsmt w/ a family rm, wet bar, a 3 pc bath, wine storage rm 14'X32' indoor POOL! Newer triple pane windows & shingles. Backyard is very private, serene & peaceful w/ mature trees. Walking distance to Earl Buxton, ravine & river valley trails. This is a once in a lifetime opportunity to own this unique home!

Built in 1982

Essential Information

MLS® # E4429990

Price \$899,800



Bedrooms	3
Bathrooms	3.50
Full Baths	3
Half Baths	1
Square Footage	2,230
Acres	0.00
Year Built	1982
Type	Single Family
Sub-Type	Detached Single Family
Style	2 Storey
Status	Active

Community Information

Address	948 Rice Road
Area	Edmonton
Subdivision	Rhatigan Ridge
City	Edmonton
County	ALBERTA
Province	AB
Postal Code	T6R 1A1

Amenities

Amenities	Air Conditioner, Pool-Indoor, Vinyl Windows, Walkout Basement
Parking	Double Garage Attached
Has Pool	Yes

Interior

Interior Features	ensuite bathroom
Appliances	Air Conditioning-Central, Dishwasher-Built-In, Garage Control, Garage Opener, Hood Fan, Oven-Built-In, Refrigerator, Storage Shed, Stove-Countertop Electric
Heating	Hot Water, Natural Gas
Fireplace	Yes
Fireplaces	Glass Door, Tile Surround
Stories	3
Has Basement	Yes
Basement	Full, Finished

Exterior

Exterior	Wood
Exterior Features	Cul-De-Sac, Fenced, Landscaped, Playground Nearby, Private Setting, Schools, See Remarks
Roof	Asphalt Shingles
Construction	Wood
Foundation	Concrete Perimeter

School Information

Elementary	EARL BUXTON SCHOOL
Middle	RIVERBEND SCHOOL
High	LILLIAN OSBORNE SCHOOL

Additional Information

Date Listed	April 10th, 2025
Days on Market	16
Zoning	Zone 14

DATA IS DEEMED RELIABLE BUT IS NOT GUARANTEED ACCURATE BY THE REALTORS® ASSOCIATION OF EDMONTON. COPYRIGHT 2025 BY THE REALTORS® ASSOCIATION OF EDMONTON. ALL RIGHTS RESERVED. Trademarks are owned or controlled by the Canadian Real Estate Association (CREA) and identify real estate professionals who are members of CREA (REALTOR®, REALTORS®) and/or the quality of services they provide (MLS®, Multiple Listing Service®)

Listing information last updated on April 26th, 2025 at 6:47am MDT