

\$739,000 - 5304 104a Street, Edmonton

MLS® #E4428485

\$739,000

4 Bedroom, 3.50 Bathroom, 1,678 sqft
Single Family on 0.00 Acres

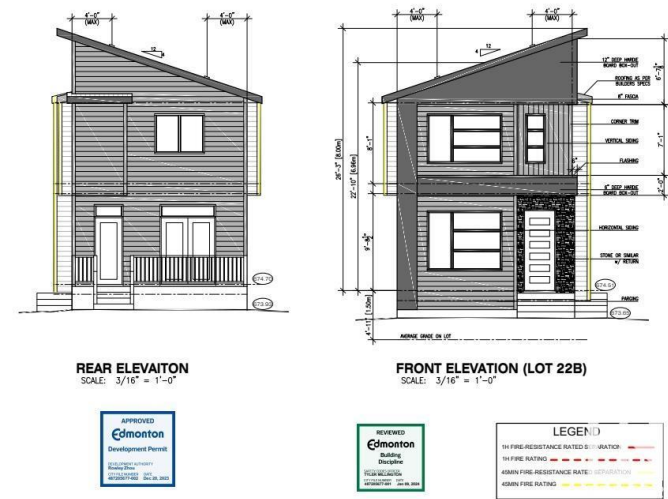
Pleasantview (Edmonton), Edmonton, AB

This beautiful infill home is located in the highly sought-after Pleasant View area, just a short distance from Southgate Mall. Its prime location offers easy access to all amenities, making it an ideal choice for convenience and lifestyle. This is a unique chance , with the opportunity to still customize your walls and flooring . The main floor features living and dining area, a spacious kitchen, a half bath, mudroom, foyer, and a deck “ perfect for both entertaining and everyday living. Upstairs, you will find a master bedroom complete with a full ensuite bath and walk-in closet, along with two additional bedrooms and a full bathroom. The basement offers extra space with a bedroom, a full bathroom, and a large rec room. The home also includes a FULLY FINISHED LEGAL SUITE WITH SEPERATE ENTRANCE. The property has detached double garage. Every corner of the house has been thoughtfully designed to maximize space and functionality, windows fill the home with natural light.

Built in 2024

Essential Information

MLS® #	E4428485
Price	\$739,000
Bedrooms	4



Bathrooms	3.50
Full Baths	3
Half Baths	1
Square Footage	1,678
Acres	0.00
Year Built	2024
Type	Single Family
Sub-Type	Detached Single Family
Style	2 Storey
Status	Active

Community Information

Address	5304 104a Street
Area	Edmonton
Subdivision	Pleasantview (Edmonton)
City	Edmonton
County	ALBERTA
Province	AB
Postal Code	T6H 2M1

Amenities

Amenities	Deck, No Animal Home, No Smoking Home, Infill Property, HRV System
Parking	Double Garage Detached

Interior

Interior Features	ensuite bathroom
Appliances	See Remarks
Heating	Forced Air-1, Natural Gas
Fireplace	Yes
Fireplaces	Glass Door
Stories	3
Has Suite	Yes
Has Basement	Yes
Basement	Full, Finished

Exterior

Exterior	Wood, Vinyl
Exterior Features	Playground Nearby, Public Transportation, Schools, Shopping Nearby
Roof	Asphalt Shingles

Construction	Wood, Vinyl
Foundation	Concrete Perimeter

School Information

Elementary	Lendrum School
Middle	Donnan School
High	Strathcona School

Additional Information

Date Listed	April 1st, 2025
Days on Market	73
Zoning	Zone 15

DATA IS DEEMED RELIABLE BUT IS NOT GUARANTEED ACCURATE BY THE REALTORS® ASSOCIATION OF EDMONTON. COPYRIGHT 2025 BY THE REALTORS® ASSOCIATION OF EDMONTON. ALL RIGHTS RESERVED.Trademarks are owned or controlled by the Canadian Real Estate Association (CREA) and identify real estate professionals who are members of CREA (REALTOR®, REALTORS®) and/or the quality of services they provide (MLS®, Multiple Listing Service®)

Listing information last updated on June 13th, 2025 at 8:32pm MDT