

## \$345,000 - 805 10142 111 Street, Edmonton

MLS® #E4422159

**\$345,000**

2 Bedroom, 2.00 Bathroom, 1,141 sqft

Condo / Townhouse on 0.00 Acres

W&hkw&ant&win, Edmonton, AB

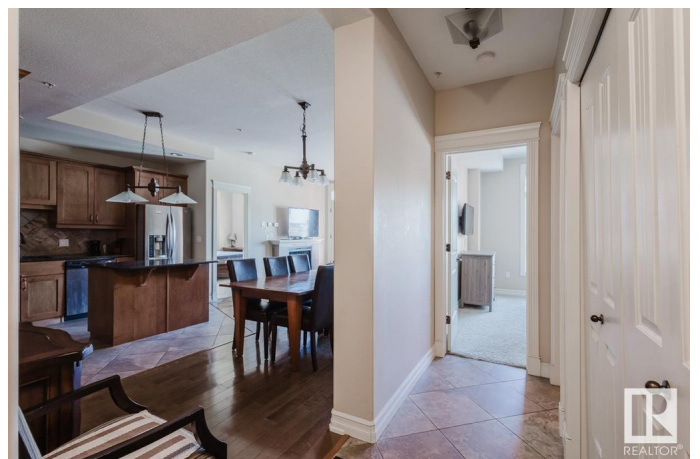
Step into urban sophistication! This luxurious 2-bedroom corner condo in Meridian Plaza dazzles from the 8th floor with SOUTHWEST EXPOSURE, bathing both living spaces in sunlight through dual-aspect windows. Soaring 9'™ ceilings, rich hardwood flooring, and sleek ceramic tiles create a grand entrance. The living room features a TWO-SIDED FIREPLACE and garden doors opening to a balcony with a gas BBQ hookup—ideal for entertaining. The OPEN-CONCEPT KITCHEN impresses with wood cabinetry, granite countertops, a central island, and stainless steel appliances. The master suite boasts a walk-in closet and a spa-like 4pc ensuite with a soaker tub and glass shower, while a second full bathroom serves guests. Practical perks include in-suite laundry, HEATED UNDERGROUND PARKING, and a storage locker. Enjoy premium building amenities: two elevators, an event center, owner's lounge, fitness room, and bike storage. Perfectly blending elegance and convenience, this downtown gem redefines luxury living.

Built in 2009

### Essential Information

MLS® # E4422159

Price \$345,000



Bedrooms	2
Bathrooms	2.00
Full Baths	2
Square Footage	1,141
Acres	0.00
Year Built	2009
Type	Condo / Townhouse
Sub-Type	Apartment High Rise
Style	Single Level Apartment
Status	Active

### Community Information

Address	805 10142 111 Street
Area	Edmonton
Subdivision	WÃ©hkwÃ©ntÃ©win
City	Edmonton
County	ALBERTA
Province	AB
Postal Code	T5K 1K6

### Amenities

Amenities	Air Conditioner, Ceiling 9 ft., See Remarks
Parking	Heated, Underground

### Interior

Interior Features	ensuite bathroom
Appliances	Air Conditioning-Central, Dishwasher-Built-In, Hood Fan, Oven-Microwave, Refrigerator, Stacked Washer/Dryer, Stove-Electric, Window Coverings
Heating	Heat Pump, Natural Gas
# of Stories	10
Stories	1
Has Basement	Yes
Basement	None, No Basement

### Exterior

Exterior	Concrete, Brick, Stucco
Exterior Features	Public Transportation, View Downtown, See Remarks
Roof	Metal

Construction	Concrete, Brick, Stucco
Foundation	Concrete Perimeter

**Additional Information**

Date Listed	February 20th, 2025
Days on Market	67
Zoning	Zone 12
Condo Fee	\$747

DATA IS DEEMED RELIABLE BUT IS NOT GUARANTEED ACCURATE BY THE REALTORS® ASSOCIATION OF EDMONTON. COPYRIGHT 2025 BY THE REALTORS® ASSOCIATION OF EDMONTON. ALL RIGHTS RESERVED.Trademarks are owned or controlled by the Canadian Real Estate Association (CREA) and identify real estate professionals who are members of CREA (REALTOR®, REALTORS®) and/or the quality of services they provide (MLS®, Multiple Listing Service®)

Listing information last updated on April 28th, 2025 at 1:02pm MDT