

Courtesy Of Chris Broadhurst Of RE/MAX River City

# **\$185,950 - 101 10520 80 Avenue, Edmonton**

MLS® #E4418454

**\$185,950**

2 Bedroom, 2.00 Bathroom, 944 sqft

Condo / Townhouse on 0.00 Acres

Queen Alexandra, Edmonton, AB

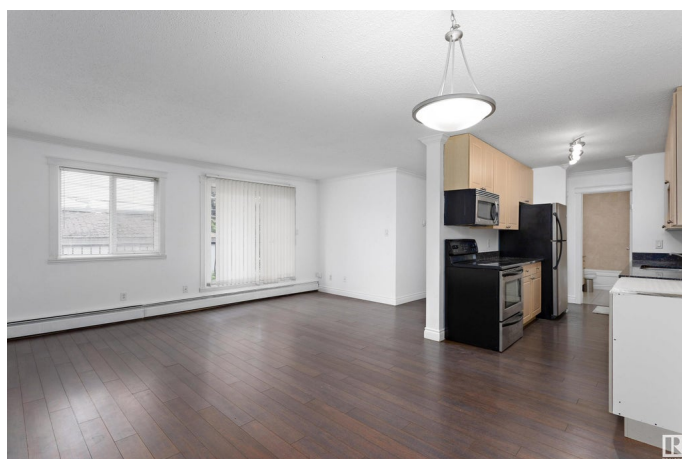
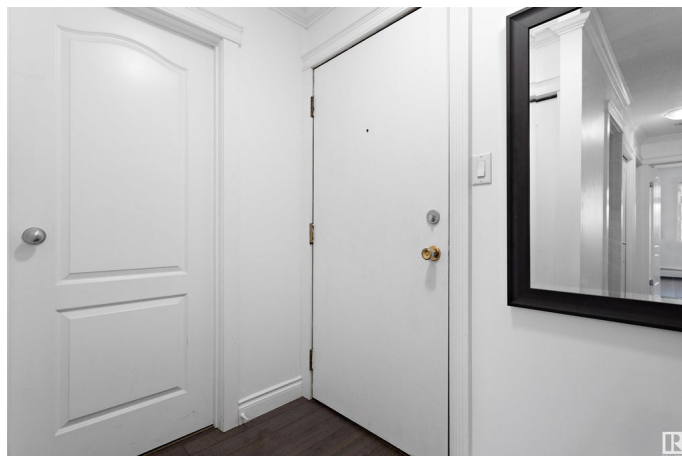
Amazing opportunity for ownership or investment. A can't beat location just off Whyte Ave and all that offers, this spacious 2 bedroom, 2 bathroom unit has it all in a nice open concept and affordable package. Unit also offers in-suite laundry and storage which offers a level of convenience not many similar units do. Transit, shops, entertainment, parks, the U of A and our world renowned river valley are steps away and everything that makes this a must to consider.

Built in 1981

## **Essential Information**

MLS® #	E4418454
Price	\$185,950
Bedrooms	2
Bathrooms	2.00
Full Baths	2
Square Footage	944
Acres	0.00
Year Built	1981
Type	Condo / Townhouse
Sub-Type	Lowrise Apartment
Style	Single Level Apartment
Status	Active

## **Community Information**



Address	101 10520 80 Avenue
Area	Edmonton
Subdivision	Queen Alexandra
City	Edmonton
County	ALBERTA
Province	AB
Postal Code	T6E 1V3

### Amenities

Amenities	Security Door, Storage-In-Suite
Parking	Stall

### Interior

Appliances	Dishwasher-Built-In, Dryer, Microwave Hood Fan, Refrigerator, Stove-Electric, Washer, Window Coverings
Heating	Baseboard, Water
# of Stories	4
Stories	1
Has Basement	Yes
Basement	None, No Basement

### Exterior

Exterior	Wood, Brick, Stucco
Exterior Features	Back Lane, Landscaped, Playground Nearby, Public Transportation, Schools, Shopping Nearby
Roof	Tar & Gravel
Construction	Wood, Brick, Stucco
Foundation	Concrete Perimeter

### Additional Information

Date Listed	January 17th, 2025
Days on Market	102
Zoning	Zone 15
Condo Fee	\$467

DATA IS DEEMED RELIABLE BUT IS NOT GUARANTEED ACCURATE BY THE REALTORS® ASSOCIATION OF EDMONTON. COPYRIGHT 2025 BY THE REALTORS® ASSOCIATION OF EDMONTON. ALL RIGHTS RESERVED. Trademarks are owned or controlled by the Canadian Real Estate Association (CREA) and identify real estate professionals who are members of CREA (REALTOR®, REALTORS®) and/or the quality of services they provide (MLS®, Multiple Listing Service®)

Listing information last updated on April 29th, 2025 at 8:32am MDT